



Per Month

£1,475

****AVAILABLE BEGINNING OF JUNE****

A beautifully presented, two double bedroom, top floor apartment that is situated in the popular Princes Gate development and is a short walk of High Wycombe train station providing a direct line service into London Marylebone. The accommodation comprises; entrance hall, spacious living room with a large feature bay window over looking a park and green, fitted kitchen with integrated fridge/freezer and washing machine, master bedroom with fitted wardrobes and en-suite shower room, further double bedroom and family bathroom. The property also benefits from; UPVC double glazing, modern electric heating, loft space and allocated parking. The 1979 Estate Agents Act requires us to disclose that the landlord is related to an employee of Hurst Estate Agents.



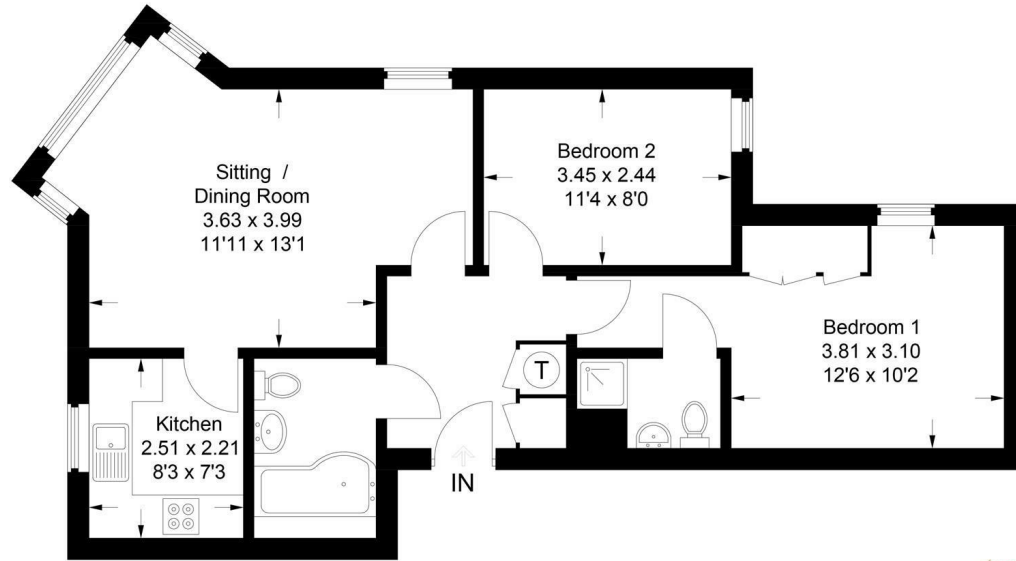
- AVAILABLE BEGINNING OF JUNE
- ALLOCATED PARKING
- UPVC DOUBLE GLAZING
- UNFURNISHED
- TWO DOUBLE BEDROOMS
- EN SUITE TO MASTER
- MODERN KITCHEN
- BUILT IN WARDROBES
- CLOSE TO TRAIN STATION
- GOOD VIEWS



28 Priestley Court Princes Gate, High Wycombe, Bucks, HP13 7WZ

Estate Agents ~ Lettings Agents ~ Valuers ~ Independent Mortgage Advisors

Approximate Gross Internal Area = 62.7 sq m / 675 sq ft



This plan is for layout guidance only. Not drawn to scale unless stated. Windows and door openings are approximate. Whilst every care is taken in the preparation of this plan, please check all dimensions, shapes and compass bearings before making any decisions reliant upon them.
© CJ Property Marketing Ltd Produced for Hurst

